



CORPOBONITO
by Andreia

NEW COLLECTION

2021-2022

CORPOBONITO ATELÍ:

6881 Kingspointe PKwy Suite #16
Orlando, Florida 32819

PHONE: (407)4152452

E-MAIL: Info@corpobonitowear.com

NEW IN

BIRTHDAY
cake

new
COLLECTION

CorpoBonito by Andreia captures the authentic **Brazilian swimwear** designs that let you love your body and embrace your confident new look. Each collection is infused with the charm and mystique of Brazilian native beaches and the stunning women we see there.

One look at the newest designs, subtle details and unmatched quality and you'll see why the world is becoming enamored with these luxury collections.

**BRAZILIAN DESIGN • REVERSIBLE
• ADJUSTABLE • ELEGANT**





ONE PIECE



ONE PIECE ANA

DESCRIPTION: ONE PIECE WITH BELT

SIZE: S | M | L
Wholesale: \$45,00
MSRP: \$178

Colors:

1	2	3	4	5	6	7	8	9	10	11	12	13	14	15	16	17
18	19	20	21	22	23	24	25	26	27	28	29	30	31	32	33	34



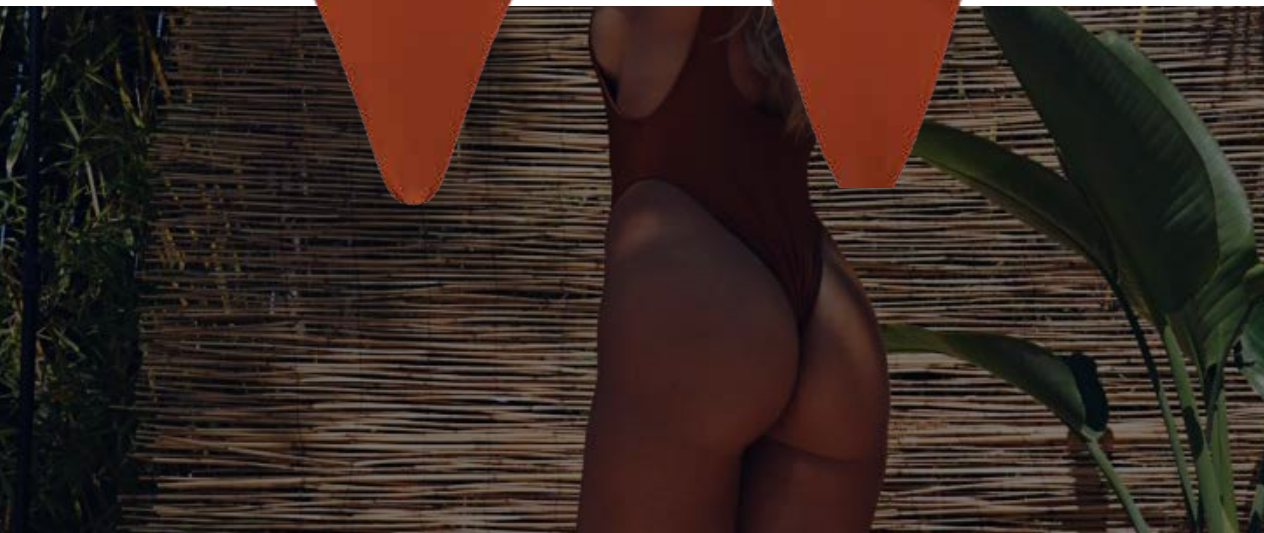
ONE PIECE PAMELA

DESCRIPTION: ONE PIECE PAMELA HIGH WAIST

SIZE: S | M | L

Wholesale: \$35,00

MSRP: \$178





BODYSUIT JULIA

DESCRIPTION: LONG-SLEEVE BODYSUIT JULIA

SIZE: S | M | L

Wholesale: \$60

MSRP: \$178

Colors:

1	2	3	4	5	6	7	8	9	10	11	12	13	14	15	16	17
18	19	20	21	22	23	24	25	26	27	28	29	30	31	32	33	34



ONE PIECE VIVIAN

DESCRIPTION: ONE PIECE VIVIAN PLUNGE

SIZE: S | M | L

Wholesale: \$40,00

MSRP: \$110

Colors:

1	2	3	4	5	6	7	8	9	10	11	12	13	14	15	16	17
18	19	20	21	22	23	24	25	26	27	28	29	30	31	32	33	34



BODY SUIT PLUNGE LETICIA

DESCRIPTION: BODY SUIT PLUNGE LETICIA

SIZE: S | M | L

Wholesale: \$40

MSRP: \$178





SET - TOP MORGANA BOTTOM KATE

DESCRIPTION: BANDEAU WITH RING DETAIL - MIDDLE WITH TIES/
HIGHWAIST BOTTOM

SIZE: S | M | L
Top: \$42 | Bottom: 22.50
MSRP: \$178

- Colors:
- | | | | | | | | | | | | | | | | | |
|----|----|----|----|----|----|----|----|----|----|----|----|----|----|----|----|----|
| 1 | 2 | 3 | 4 | 5 | 6 | 7 | 8 | 9 | 10 | 11 | 12 | 13 | 14 | 15 | 16 | 17 |
| | | | | | | | | | | | | | | | | |
| 18 | 19 | 20 | 21 | 22 | 23 | 24 | 25 | 26 | 27 | 28 | 29 | 30 | 31 | 32 | 33 | 34 |
| | | | | | | | | | | | | | | | | |

SETS



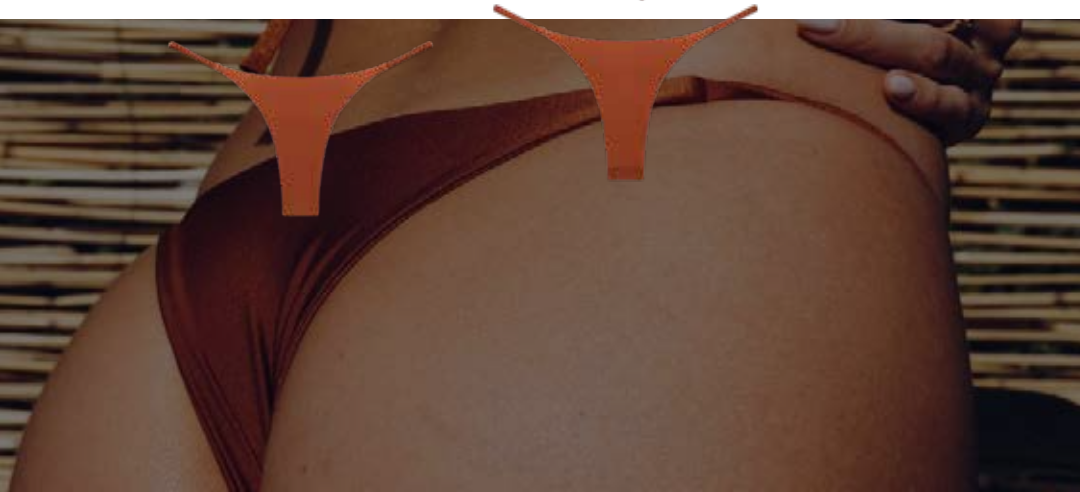
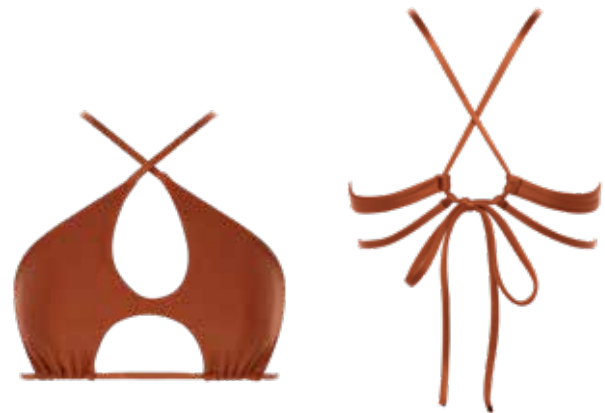
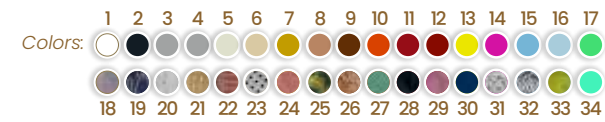
SET - TOP LUCY/ BOTTOM LUIZA

DESCRIPTION: TOP LUCY/ BOTTOM LUIZA

SIZE: S | M | L

Top: \$22.50 | Bottom: \$22.50

MSRP: \$178





SET - TOP CAROL BOTTOM CAROL

DESCRIPTION: BANDEAU WITH RUFFLES- EDGES/ BOTTOM WITH RUFFLES- EDGES

SIZE: S | M | L
Top: \$18 | Bottom: \$22.50
MSRP: \$178

- Colors:
- | | | | | | | | | | | | | | | | | |
|----|----|----|----|----|----|----|----|----|----|----|----|----|----|----|----|----|
| 1 | 2 | 3 | 4 | 5 | 6 | 7 | 8 | 9 | 10 | 11 | 12 | 13 | 14 | 15 | 16 | 17 |
| | | | | | | | | | | | | | | | | |
| 18 | 19 | 20 | 21 | 22 | 23 | 24 | 25 | 26 | 27 | 28 | 29 | 30 | 31 | 32 | 33 | 34 |
| | | | | | | | | | | | | | | | | |



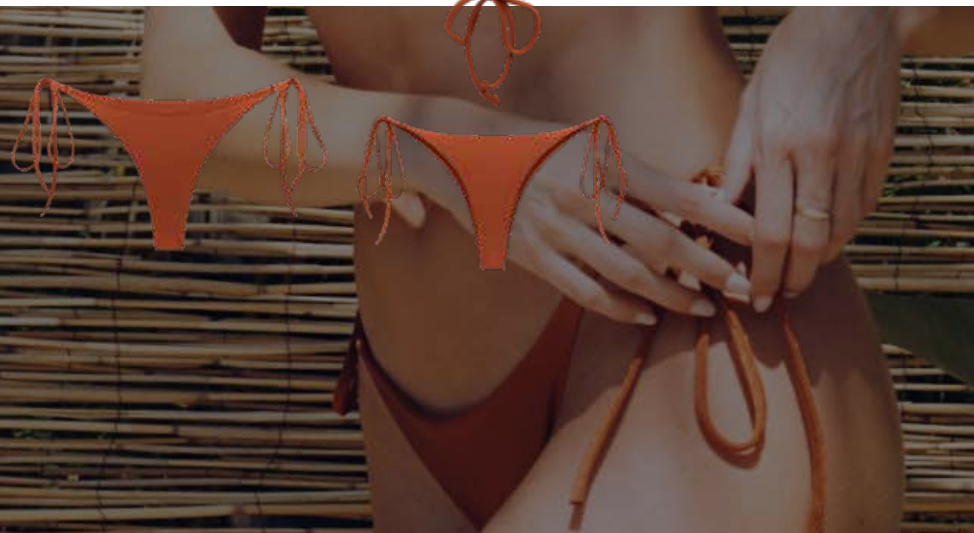
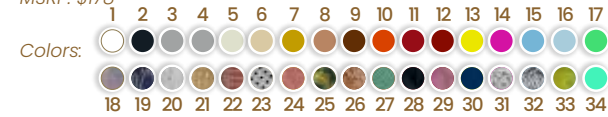
SET - TOP D DOUBLE STRINGS BOTTOM LUIZA TIE

DESCRIPTION: TOP D DOUBLE STRINGS/ BOTTOM LUIZA TIE SIDE

SIZE: S | M | L

Top: \$19.50 | Bottom: \$22.50

MSRP: \$178






SET - TOP D DOUBLE STRINGS/ BOTTOM KARINA

DESCRIPTION: TOP D DOUBLE STRINGS/ BOTTOM KARINA

SIZE: S | M | L

Wholesale: \$19.50 | Bottom: \$22.50

MSRP: \$178

Colors: 



SET- TOP I BOTTOM BARBIE

DESCRIPTION: FIX TRI TOP WITH CRISS-CROSS BACK/ HIGH HIP BOTTOM

SIZE: S | M | L

Top: \$22.50 | Botton: \$22.50

MSRP: \$178





SET - TOP 07 UNDERWIRE BOTTOM LISA

DESCRIPTION: UNDERWIRE SUPPORT TOP/ REVERSIBLE BOTTOM WITH SCRUNCH

SIZE: S | M | L

Top: \$36.00 | Bottom: \$19.50

MSRP: \$178



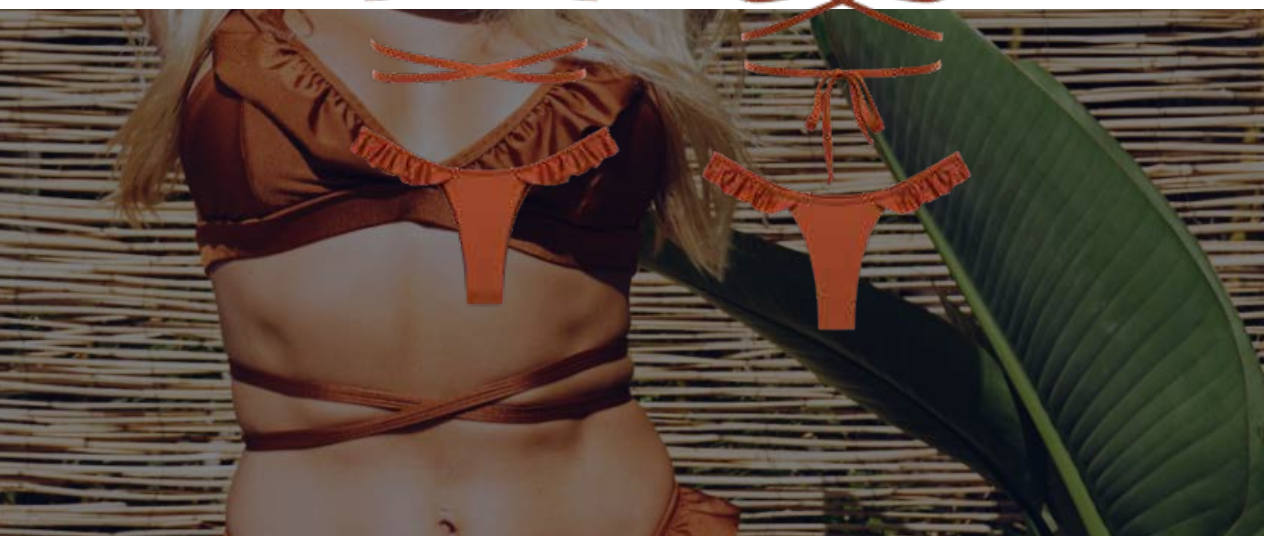
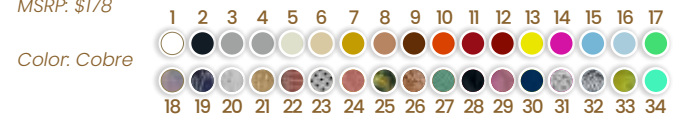
SET - TOP I WITH RUFFLES / BOTTOM LUIZA WITH RUFFLES

DESCRIPTION: RUFFLES FIX TRI TOP, CRISS-CROSS BACK / RUFFLES FIX BOTTOM

SIZE: S | M | L

Top: \$22.50 | Bottom: \$22.50

MSRP: \$178





SET - TOP KATE/ BOTTOM ANDREA

DESCRIPTION: TOP KATE WITH FIXED PADS/ BOTTOM ANDREA SCRUNCH BACK

SIZE: S | M | L

Top: \$32.00 | Bottom: \$22.50

MSRP: \$178

Colors:

1	2	3	4	5	6	7	8	9	10	11	12	13	14	15	16	17
18	19	20	21	22	23	24	25	26	27	28	29	30	31	32	33	34



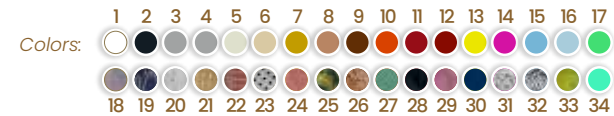
SET - TOP FABI/ BOTTOM LUIZA

DESCRIPTION: BOTTOM TIE-SIDE WITH SCRUNCH BACK

SIZE: S | M | L

Top: \$22.50 | Bottom: \$19.50

MSRP: \$178





SET - TOP D/ BOTTOM LUIZA TIE SIDE

DESCRIPTION: TRI TOP/ TIE SIDE BOTTOM

SIZE: S | M | L

Top: \$19.50 | Bottom: \$22.50

MSRP: \$178

Colors:

1	2	3	4	5	6	7	8	9	10	11	12	13	14	15	16	17
18	19	20	21	22	23	24	25	26	27	28	29	30	31	32	33	34



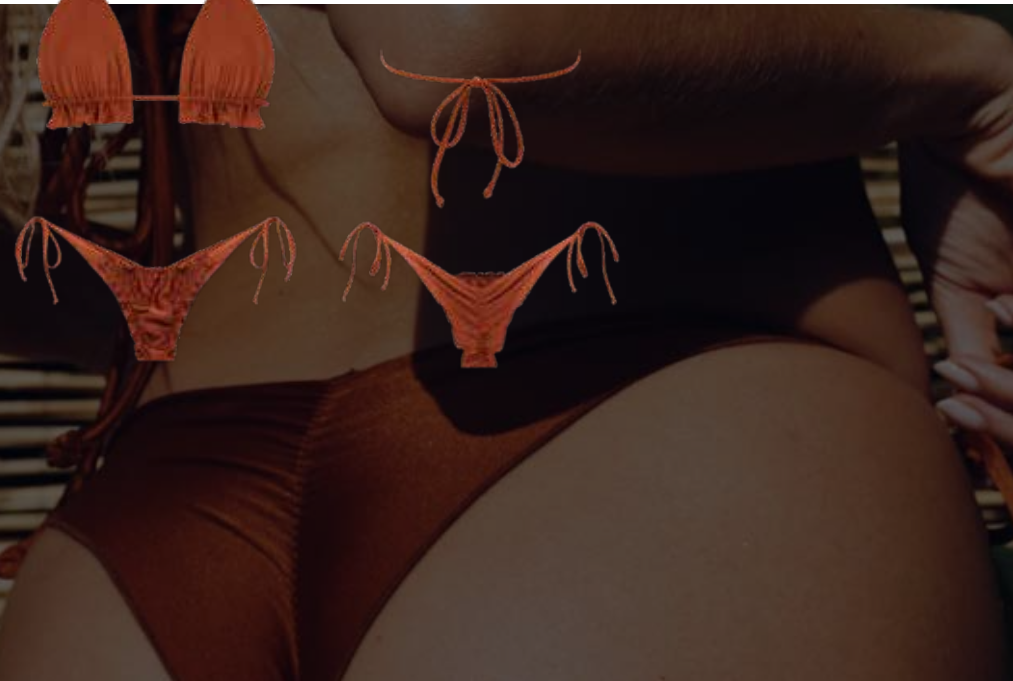
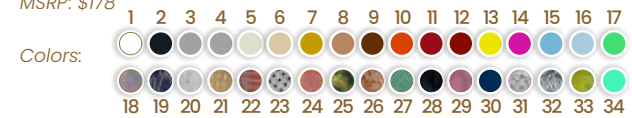
SET - TOP FABRI/ BOTTOM MARINA

DESCRIPTION: RUFFLES EDGES/ RUFFLES EDGES TIE SIDE REVERSIBLE

SIZE: S | M | L

Top: \$22.50 | Bottom: \$22.50

MSRP: \$178





SET - TOP KATE/ BOTTOM ANDREA

DESCRIPTION: TOP KATE WITH FIXED PADS/ BOTTOM ANDREA SCRUNCH BACK

SIZE: S | M | L

Top: \$34.00 | Bottom: \$22.50

MSRP: \$178

Colors:

1	2	3	4	5	6	7	8	9	10	11	12	13	14	15	16	17
18	19	20	21	22	23	24	25	26	27	28	29	30	31	32	33	34





ONE PIECE

BIRTHDAY
cake

new
COLLECTION



BODYSUIT KARISSA

DESCRIPTION: LONG SLEEVE BODYSUIT

SIZE: S | M | L

Wholesale: \$40

MSRP: \$180

Colors:

1	2	3	4	5	6	7	8	9	10	11	12	13	14	15	16	17
18	19	20	21	22	23	24	25	26	27	28	29	30	31	32	33	34



BODYSUIT KARISSA

DESCRIPTION: LONG SLEEVE BODYSUIT

SIZE: S | M | L

Wholesale: \$40

MSRP: \$180



SET - TOP D DOUBLE STRINGS/ BOTTOM CAMILLE TANGA STYLE

DESCRIPTION: TOP D DOUBLE STRINGS AROUND THE NECK/ BOTTOM CAMILLE TANGA STYLE SCUNCH BACK

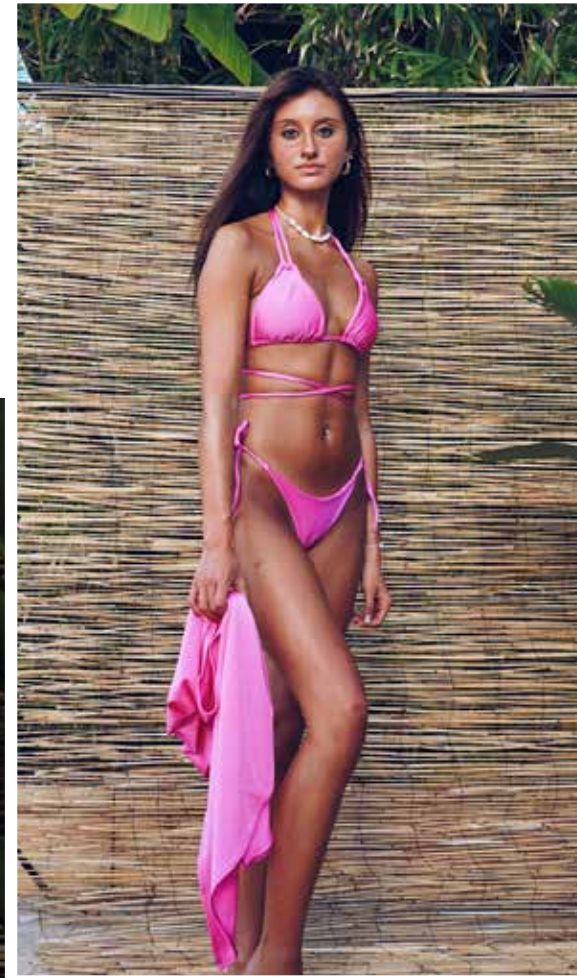
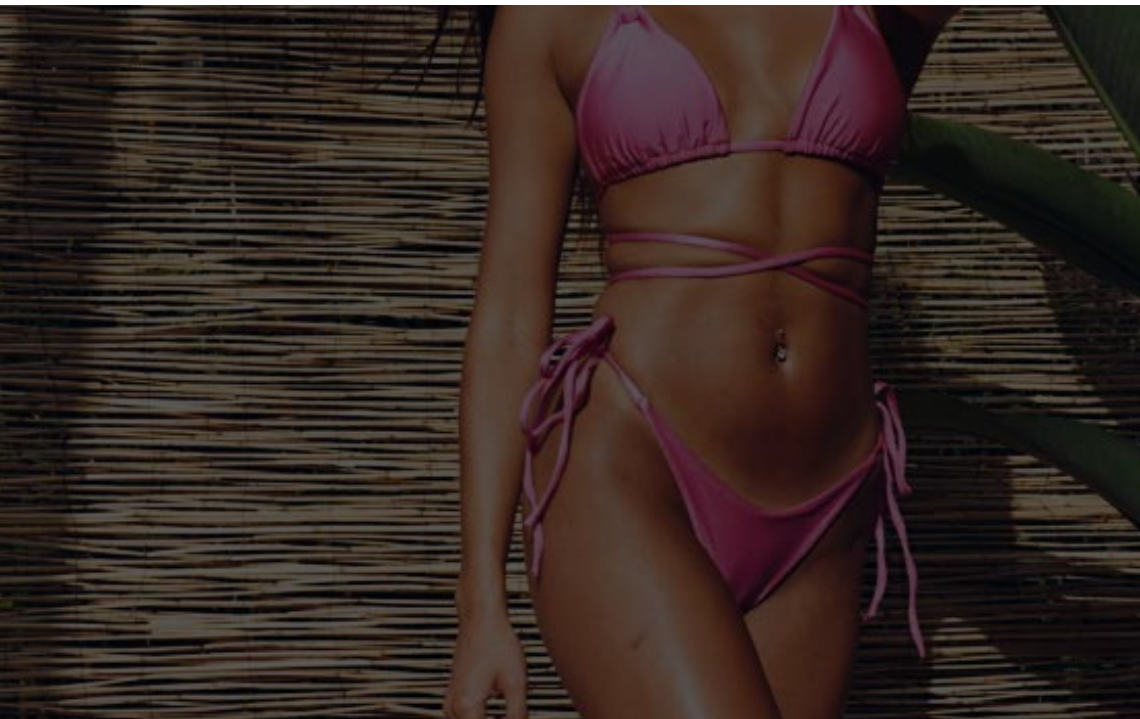
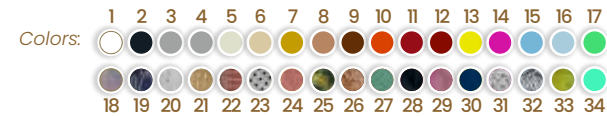
SIZE: S | M | L

Top: \$18.50 | Bottom: \$22.50

MSRP: \$178

SHORT SKIRT COVER-UP

SKIRT: \$22.50 | MSRP: \$60





SET- TOP 05 BANDEAU TWIST/ BOTTOM INDIO

DESCRIPTION: TOP 05 BANDEAU TWIST/ BOTTOM INDIO RED

SIZE: S | M | L

Top: \$18.50 | Bottom: \$22.50

MSRP: \$178

Colors:

1	2	3	4	5	6	7	8	9	10	11	12	13	14	15	16	17
18	19	20	21	22	23	24	25	26	27	28	29	30	31	32	33	34





SET - TOP CAROL WITH SLEEVES/ BOTTOM BARBIE

DESCRIPTION: TOP CAROL WITH SLEEVES/ BOTTOM BARBIE
SIZE: S | M | L
Top: \$22.50 | Bottom: \$24
MSRP: \$178

- Colors:
- | | | | | | | | | | | | | | | | | |
|----|----|----|----|----|----|----|----|----|----|----|----|----|----|----|----|----|
| 1 | 2 | 3 | 4 | 5 | 6 | 7 | 8 | 9 | 10 | 11 | 12 | 13 | 14 | 15 | 16 | 17 |
| 18 | 19 | 20 | 21 | 22 | 23 | 24 | 25 | 26 | 27 | 28 | 29 | 30 | 31 | 32 | 33 | 34 |





CROCHET SAN'S

DESCRIPTION: CROCHET SAN'S HAND MADE

OPTIONS: FIXED OR TIE SIDE BOTTOM STYLE

SIZE: S | M | L

Wholesale: \$80

MSRP: \$180

Colors: 



SET - TOP 05 BANDEAU TWIST/ BOTTOM INDIO

DESCRIPTION: TOP 05 BANDEAU TWIST/ BOTTOM INDIO

SIZE: S | M | L

Top: \$19.50 | Bottom: \$22.50

MSRP: \$178

Colors:

1	2	3	4	5	6	7	8	9	10	11	12	13	14	15	16	17
18	19	20	21	22	23	24	25	26	27	28	29	30	31	32	33	34





SET - TOP SQUARE/ BOTTOM KATE HIGH-WAIST

DESCRIPTION: TOP SQUARE/ BOTTOM KATE

SIZE: S | M | L

Top: \$19.50 | Bottom: \$22.50

MSRP: \$178

Colors:

1	2	3	4	5	6	7	8	9	10	11	12	13	14	15	16	17
18	19	20	21	22	23	24	25	26	27	28	29	30	31	32	33	34





CORPOBONITO
by Andreia

CORPOBONITO ATELIÉ:

6881 Kingspointe PKwy Suite #16
Orlando, Florida 32819

PHONE: (407)4152452

E-MAIL: Info@corpobonitowear.com